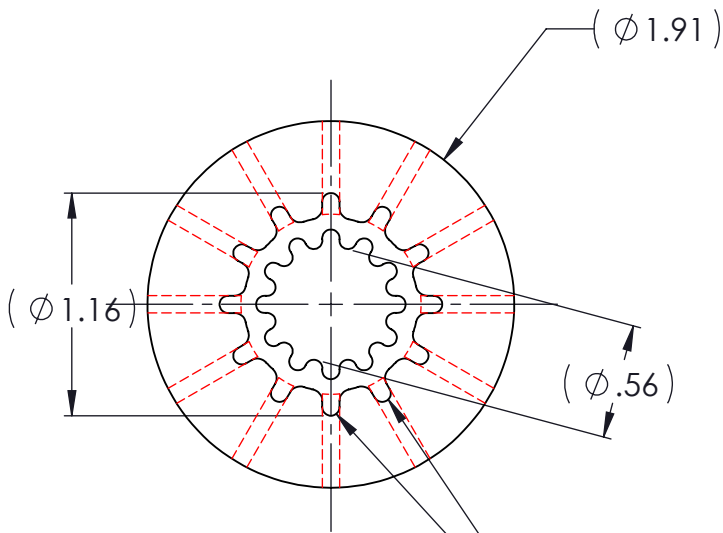
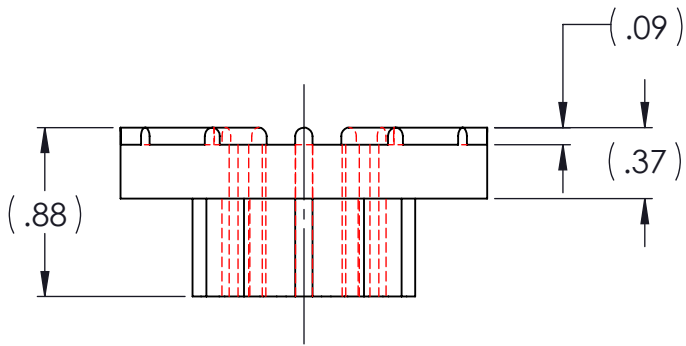
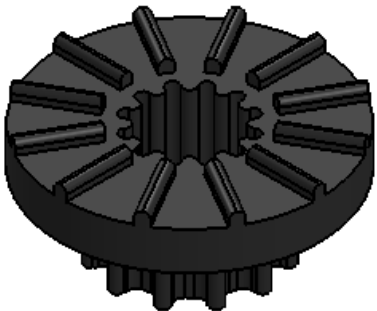


REVISIONS			
REV.	DESCRIPTION	DATE	APPROVED
1	INITIAL RELEASE OF DRAWING	8/28/2014	BS



12 FINGERS EACH SIDE  
POSITIONED IN PHASE  
AS SHOWN

NOTES:

- 1 MATERIAL: ELASTOMER AND DUROMETER OF 40, 50, 60 OR 70 TO BE SPECIFIED.
- 2 ALL DIMENSIONS ARE REFERENCE.

PROPRIETARY AND  
CONFIDENTIAL  
THE INFORMATION  
CONTAINED IN THIS  
DRAWING IS THE SOLE  
PROPERTY OF  
KARMAN RUBBER. ANY  
REPRODUCTION IN PART  
OR AS A WHOLE  
WITHOUT THE WRITTEN  
PERMISSION OF  
KARMAN RUBBER  
IS PROHIBITED.

SIGNATURE		DATE
DRAWN	B. SENEAL	08/28/2014
CHECK	S. BROWN	08/28/2014
ENGR	B. SENEAL	08/28/2014
QA		
STRESS		
APPR		

UNLESS OTHERWISE SPECIFIED:  
DIMENSIONS ARE IN INCHES  
TOLERANCES:  
.X =  
.XX = ± 0.031  
.XXX =  
ANGLES = ± 1°  
INTERPRET GEOMETRIC  
TOLERANCING PER:  
ASME Y14.5M-1994



SIZE <b>B</b>	CAGE CODE	DWG. NO. <b>K1150A</b>		REV <b>1</b>
		SCALE: 1:1	WEIGHT: .48 OZ.	SHEET 1 OF 1

K1150A	K1150A	1
QTY.	DESCRIPTION	ITEM

TITLE:  
**K1150A SERIES  
VIBRO-INSULATOR  
WWW.KARMAN.COM**